

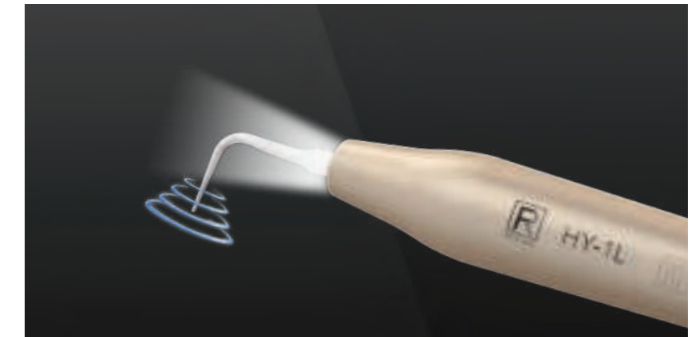
1000ml Water Tank
**PAINLESS
 SMART CONTROL**

PT 7
 Periodontal treatment device



∞ **Elliptical vibration enabling comfortable scaling and polishing**

The amplitude of the tip is between 1µm – 200µm, equivalently one third diameter hair-width.
 Elliptical vibration trajectory of tip distracts the impact force on teeth, achieving 360° comfortable scaling and polishing at the same time



∞ **Titanium tip with less hurt to cementum**



∞ **2 sets of autoclavable handpiece kit.**

Alternately use while the other is in autoclave.



∞ **Automatic water supply, easy to change water**

Dual water supply modes: external & self water supply.
 Anti-corrosion internal pipeline: Hydrogen peroxide, sodium hypochlorite and other special chemicals are all applicable.

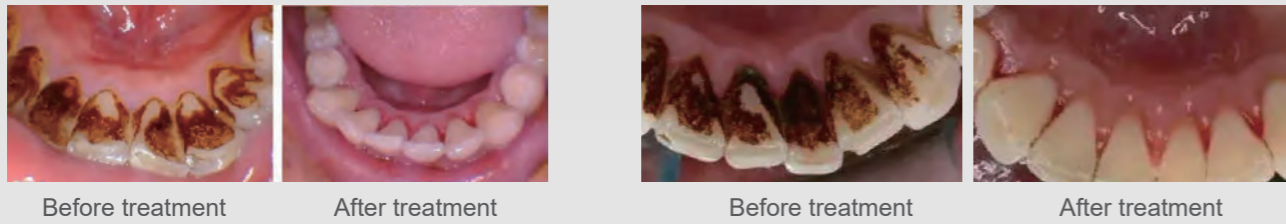


∞ **Smart control**

High sensitive touch panel control
 Elegant glass surface, waterproof and easy to clean.

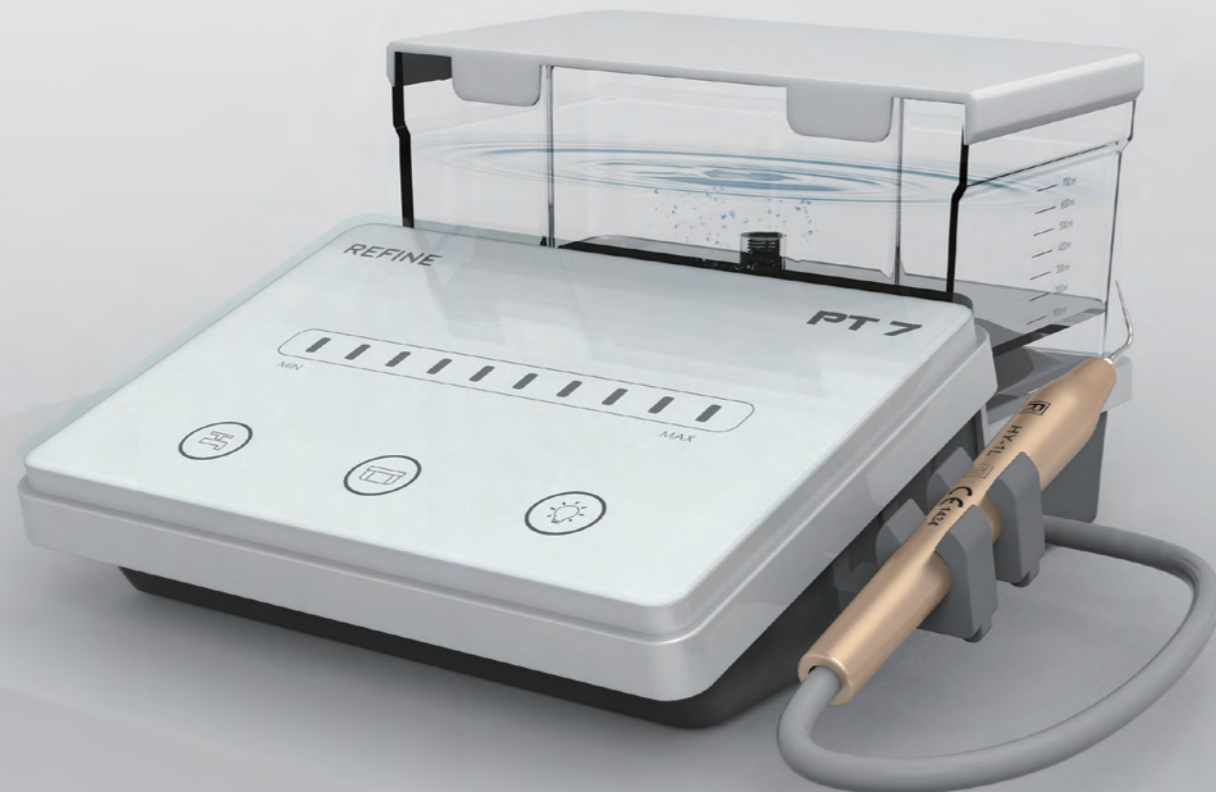


Before & After treatment



Main Specifications

Frequency	28000-42000Hz
Tips hardness	30HRC
Vibration amplitude	1-200µm
Treatment depth	14mm



CONFIGURATION TIPS

P50LT Titanium left curved tip for subgingival scaling

Apply the tip perpendicularly to the long axis of the tooth. Move the top 2mm of the tip up and down.

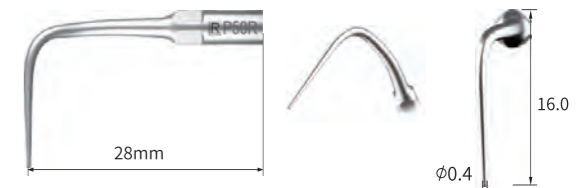
☆ Ensure that the water reaches the top 2mm of the tip



P50RT Titanium right curved tip for subgingival scaling

Apply the tip perpendicularly to the long axis of the tooth. Move the top 2mm of the tip up and down.

☆ Ensure that the water reaches the top 2mm of the tip



P52T Applicable for all buccal and lingual area

Apply the tip parallel to the long axis of the tooth. Move the top 2mm of the tip back and forward.

☆ Ensure that the water reaches the top 2mm of the tip



P56T Applicable for removing big calculus, not hurt to gum when scaling in the gingival margin

Apply the tip parallel to the long axis of the tooth. Move the top 2mm of the tip back and forward.

☆ Ensure that the water reaches the top 2mm of the tip



P59T Applicable for all buccal and lingual area

Apply the tip parallel to the long axis of the tooth. Move the top 2mm of the tip back and forward.

☆ Ensure that the water reaches the top 2mm of the tip

